

aerospace
climate control
electromechanical
filtration
fluid & gas handling
hydraulics
pneumatics
process control
sealing & shielding



Hi-Drive Series

Flexible Servo Drive



ENGINEERING YOUR SUCCESS.



WARNING – USER RESPONSIBILITY

FAILURE OR IMPROPER SELECTION OR IMPROPER USE OF THE PRODUCTS DESCRIBED HEREIN OR RELATED ITEMS CAN CAUSE DEATH, PERSONAL INJURY AND PROPERTY DAMAGE.

- This document and other information from Parker-Hannifin Corporation, its subsidiaries and authorized distributors provide product or system options for further investigation by users having technical expertise.
- The user, through its own analysis and testing, is solely responsible for making the final selection of the system and components and assuring that all performance, endurance, maintenance, safety and warning requirements of the application are met. The user must analyze all aspects of the application, follow applicable industry standards, and follow the information concerning the product in the current product catalog and in any other materials provided from Parker or its subsidiaries or authorized distributors.
- To the extent that Parker or its subsidiaries or authorized distributors provide component or system options based upon data or specifications provided by the user, the user is responsible for determining that such data and specifications are suitable and sufficient for all applications and reasonably foreseeable uses of the components or systems.

Overview 5

Technical Characteristics..... 7

- Technical Data..... 7
- Ambient Conditions..... 7
- Standards and Conformance 7
- Dimensions 8
- Connection Layout 8

Accessories and Options 9

- Keypad..... 9
- Cables..... 9
- Fieldbus Options 9
- Axis Board 10
- Software 11

Order Code..... 12

Parker Hannifin

- the global leader in motion and control technologies

A world class player on a local stage

Global Product Design

Parker Hannifin has more than 40 years experience in the design and manufacturing of drives, controls, motors and mechanical products. With dedicated global product development teams, Parker draws on industry-leading technological leadership and experience from engineering teams in Europe, North America and Asia.

Local Application Expertise

Parker has local engineering resources committed to adapting and applying our current products and technologies to best fit our customers' needs.

Manufacturing to Meet Our Customers' Needs

Parker is committed to meeting the increasing service demands that our customers require to succeed in the global industrial market. Parker's manufacturing teams seek continuous improvement through the implementation of lean manufacturing methods throughout the process. We measure ourselves on meeting our customers' expectations of quality and delivery, not just our own. In order to meet these expectations, Parker operates and continues to invest in our manufacturing facilities in Europe, North America and Asia.

Worldwide Manufacturing Locations

Europe

Littlehampton, United Kingdom
Dijon, France
Offenburg, Germany
Milan, Italy

Asia

Shanghai, China
Chennai, India

North America

Rohnert Park, California
Irwin, Pennsylvania
Wadsworth, Ohio
Charlotte, North Carolina
New Ulm, Minnesota



Offenburg, Germany

Local Manufacturing and Support in Europe

Parker provides sales assistance and local technical support through a network of dedicated sales teams and authorized technical distributors throughout Europe.

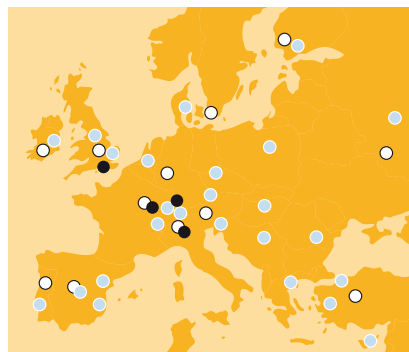
For contact information, please refer to the Sales Offices on the back cover of this document or visit www.parker.com



Milan, Italy



Littlehampton, UK



- Manufacturing
- Parker Sales Offices
- Distributors



Dijon, France

Flexible Servo Drive - Hi-Drive

Overview

Description

Hi-Drive is a fully digital drive for brushless motors with currents from 2 to 450 A and operating from 230 VAC or 480 VAC supplies. Hi-Drive is able to control induction motors; its target market is where high precision, accuracy, performance, fieldbus connectivity and custom applications are required.

Hi-Drive features several built-in motion control functions, including current, torque and speed control, positioning with trapezoidal profiles, digital lock with variable ratio and phase correction, electronic cam, real-time mode, S-ramp positioning, homing functions and position capture.

An axis card with Power PC 400 MHz micro processor which is able to control up to 32 interpolated axes via CANopen DS402, further enhances the Hi-Drive functionality.

The Hi-Drive series is suited for simple as well as extremely sophisticated applications such as: Printing machines, wood and metal working machines, feeders, palletizers, applications with different interpolated axes and robots.

Features

- Current, torque and speed control
- Positioner with trapezoidal profile and S-ramps
- Digital lock with variable ratio and phase correction
- Electronic cam
- Configurable feedback input
- Configurable second encoder input
- Fieldbus RS232, RS422/485, SBCCan, EtherCAT, CANopen DS402
- DC bus connection to clamping board is possible (mono or three-phased)
- Built-in braking resistor (to 45 A)
- Safety relay optional CAT.3 EN 954-1
- Built-in EMI filter (to 130 A)
- Built-in three-phased line choke (75...55 A)



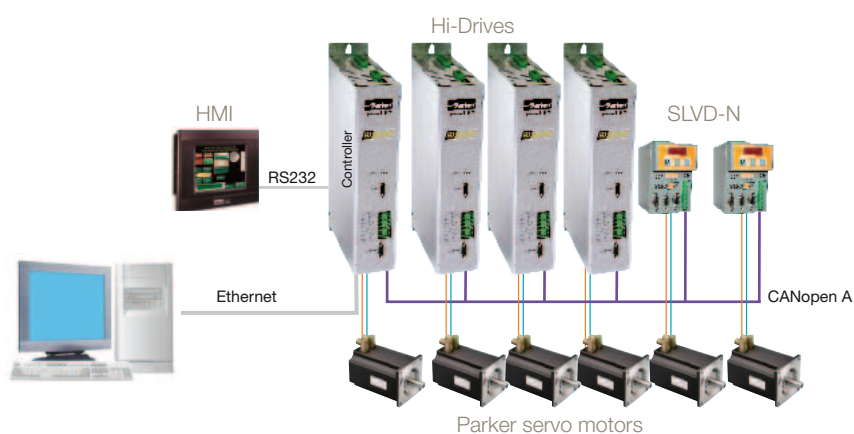
Technical Characteristics - Overview

| Device | Nominal current [A] | Peak current [A] | Peak current time [s] | Frame size | |
|--------|------------------------|---------------------|--------------------------|------------|---|
| HID2 | 2 | 4 | 2 | 1 | |
| HID5 | 5 | 10 | | | |
| HID8 | 8 | 16 | | | |
| HID10 | 10 | 20 | | 3 | 2 |
| HID15 | 15 | 30 | | | |
| HID16 | 16 | 32 | | | |
| HID25 | 25 | 50 | | | |
| HID35 | 35 | 70 | 4.5 | 3 | |
| HID45 | 45 | 90 | | | |
| HID75 | 75 | 135 | 3 | 4 | |
| HID100 | 100 | 180 | | | |
| HID130 | 130 | 234 | 4.5 | 5 | |
| HID250 | 250 | 375 | | | |
| HID450 | 450 | 675 | | | |

Applications

Trajectory control of a six axis vertical robot

This is a six axis vertical robot that drives the globe in order to direct a laser pointer on the desired city, selected from the onboard operator panel or from a remote interface. The application is driven by six servo drives, controlled by a CN board integrated in one of the drives. In the board resides the interpolation and transformation part of the robot coordinates. The data for the optimized trajectory are transmitted to the individual axes via CANopen with DSP402 profile, at defined times by the sync protocol. In order to reach motion uniformity, the controller card transmits the demand speed together with the optimized motion data. Thus, every servo drive can internally execute a cubical interpolation of the information received. Moreover at every synch the real CN quota are sent back to the six joints.



The human-machine interface is represented by an industrial PC. By the PC, the operator choose in a graphical globe the city it wants to reach and gives the start/stop command.

Technical Characteristics

Technical Data

Hi-Drive

| Model | | HID2 | HID5 | HID8 | HID10 | HID15 | HID16 | HID25 |
|---|------|--|------|------|-------|-------|-------|-------|
| | Unit | | | | | | | |
| Supply voltage and device currents | | | | | | | | |
| Supply voltage | [V] | 200...277 VAC single phase(±10 %) 50-60 Hz (±5 %) 200...480 VAC three phase (±10 %) 50-60 Hz (±5 %) | | | | | | |
| Nominal current | [A] | 2 | 5 | 8 | 10 | 15 | 16 | 25 |
| Peak Current | [A] | 4 | 10 | 16 | 20 | 30 | 32 | 50 |
| Peak current time | [s] | 2 | | | | | | |
| Control Voltage | [V] | 24 VDC (0/ +10 %) | | | | | | |
| Overload | | 200 % for 2 s | | | | | | |

| Model | | HID35 | HID45 | HID75 | HID100 | HID130 | HID250 | HID450 | |
|---|------|---|-------|-------|---|--------|--------|--------|-----|
| | Unit | | | | | | | | |
| Supply voltage and device currents | | | | | | | | | |
| Supply voltage | [V] | 200...480 VAC three phase (±10 %) 50-60 Hz (±5 %) | | | 380...480 VAC three phase (±10 %) 50-60 Hz (±5 %) | | | | |
| Nominal current | [A] | 35 | 45 | 75 | 100 | 130 | 250 | 450 | |
| Peak Current | [A] | 70 | 90 | 135 | 180 | 234 | 375 | 675 | |
| Peak current time | [s] | 2 | | | 3 | | | 4.5 | 4.5 |
| Control Voltage | [V] | 24 VDC (0/ +10 %) | | | | | | | |
| Overload | | 200 % for 2 s | | | | | | | |

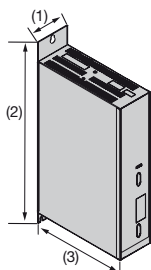
Ambient Conditions

| | |
|------------------------------------|--|
| Temperature range | Operating temperature 0...45 °C |
| Tolerated humidity | <85 % non condensing |
| Elevation of operating site | 1000 m ASL (derate by 1.5 % every 100 m) |
| Product Enclosure Rating | IP20 |

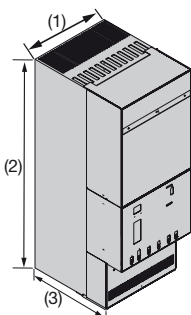
Standards and Conformance

| | |
|--|---|
| In compliance with Directive 89/336/EEC following the standard: | <ul style="list-style-type: none"> EN61800-3 (I° and II° environment) with built-in filter when available/A11 Electromagnetic Compatibility |
| In compliance with Directive 73/23/EEC following the standard: | <ul style="list-style-type: none"> EN 50178 (Safety, Low Voltage Directive) EN 60204-1 EN 61800-2 EN 61800-5-1 |
| Safety technology | EN 954-1/ISO 13849-1 (optional safety relay) |
| UL | <ul style="list-style-type: none"> UL508C (USA) CSA 22.2 No. 14-05 (Canadian) CE marked |
| ATEX | for use in or in connection with potentially explosive environments |

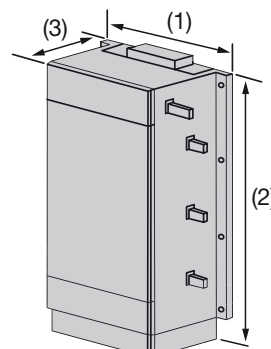
Dimensions



Sizes 1-2-3:



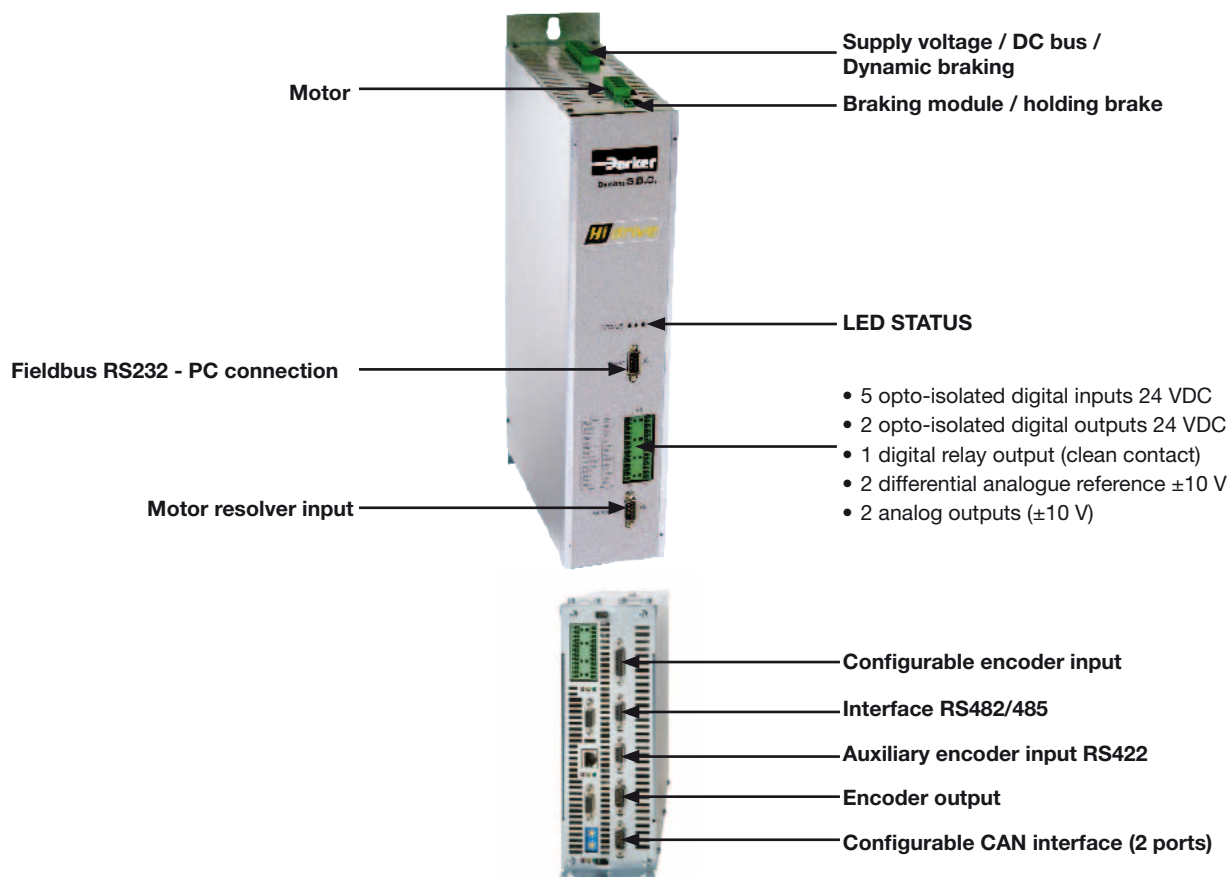
Sizes 4-5:



Size 6:

| Model | Frame size | Height (2) [mm] | Width (1) [mm] | Depth (3) [mm] | Weight [kg] |
|-----------------|------------|-----------------|----------------|----------------|-------------|
| HID 2-5-8-10-15 | 1 | 428 | 87 | 227 | 5.8 |
| HID 15 | | | - | | |
| HID 16-25 | 2 | 428 | 122 | | |
| HID 35-45 | 3 | | 227 | 16 | |
| HID 75 | 4 | 660 | 250 | 320 | 40 |
| HID 100-130-155 | 5 | 720 | | 365 | 59 |
| HID 250 | 6 | 1145 | 600 | 465 | 100 |
| HID 450 | - | 1400 | 900 | 465 | - |

Connection Layout



Accessories and Options

Keypad

SK161

Optional keypad, size 2x6 characters with upload/download functions (port RS232)



Cables

- Resolver cable
- Incremental encoder cable
- Absolute encoder EnDat + SinCos cable
- Absolute encoder Hiperface + SinCos cable
- Encoder SinCos cable
- Motor cable
- Servoventilation cable



Fieldbus Options

By selecting one of the numerous fieldbus options the Hi-Drive becomes a highly versatile networked drive. EtherCAT based on the Ethernet industry standard, has been implemented within the Hi-Drive to exploit operating performance of industrial PC's.

- EtherCAT
- CANopen (DS402)
- Profibus DP
- Sercos
- SBCCan (standard)



EtherCAT®

CANopen

PROFI®
BUS

Axis Board

High performances CN

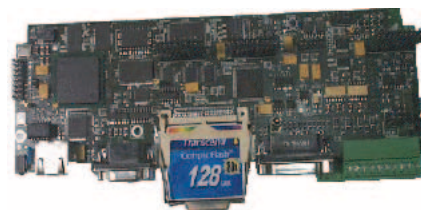
This board is an axis controller which can be integrated into the Hi-Drive in order to increase the servo drive performance.

The board can generate trajectories of "n" interpolated axes with a low dissipated power, piloting the slave axis via CANopen DSP402.

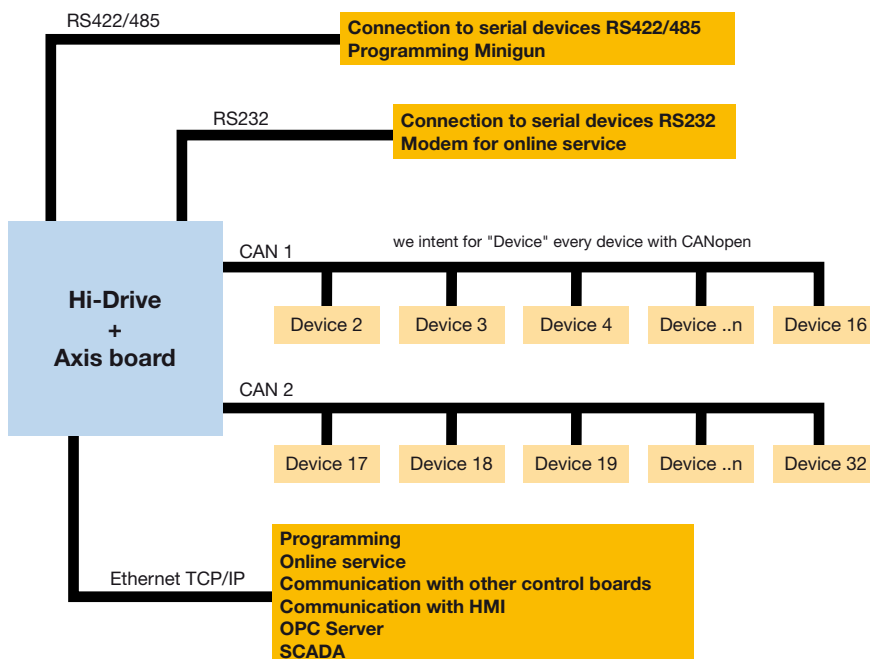
Managing resident I/O and field bus remote I/O the CN board can be linked to the plant network or to any operator panels via Ethernet TCP/IP. The board is equipped with an embedded OPC server.

Equipped with a multitasking real time operating system and can be programmed using standard programming and motion control languages.

- Power PC 400 MHz microprocessor
- Real time multitasking RTE operating system
- Cycle tasks, event control and background
- Interpolation of up to 32 axes for CPU
- CANopen DS402 communication channels
- Libraries with a wide range of function blocks
- 64 MB RAM, 128 MB extractable flash memory and 128 kB EEPROM
- RS232, RS485 and Ethernet



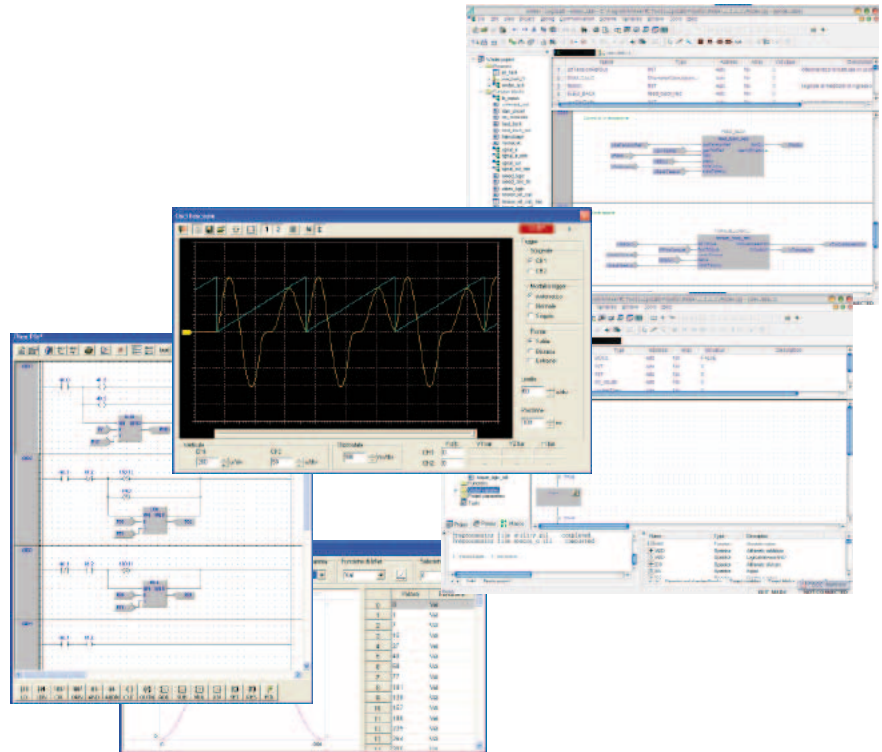
| Programming language | |
|----------------------|--------------------------------|
| Structured text | for motion control functions |
| Ladder diagram | for machine cycles programming |
| ISO | for tool machines programming |
| RHLL | for robot programming |



Software

MotionWiz and LogicLab

The free MotionWiz configuration software is available to configure the Hi-Drive system with just a few clicks of the mouse. MotionWiz features a simple and user-friendly interface to speed up installation, optimization and diagnostics procedures. To simplify configuration, MotionWiz shows a typical Windows® environment on the monitor with dialogue windows and toolbars. MotionWiz permits performing operations in both "online" mode, directly in the device, and in "offline" mode on a remote PC. In this case, personalized configuration can be sent to the mechanism subsequently. To simplify the configuration of systems with a large number of axis but with different cuts and the same operating mode, MotionWiz permits maintaining the same mechanism configuration and only changing the type of selected motor. Inside the MotionWiz configurator is a database containing the data of standard Parker motors. MotionWiz incorporates "picoPLC", a built-in PLC environment programmable with standard languages. PicoPLC allows the external word to communicate with the drive and to execute function sequences. If the customer application requires additional calculation resources, an option board programmable with PLC commands in accordance with IEC61131-3 can be inserted.



Order Code

Hi-Drive

| | 1 | 2 | 3 | 4 | 5 | 6 | 7 | 8 | 9 | 10 |
|---------------|------------|----------|----------|----------|----------|----------|-----------|-----------|----------|----------|
| Order example | HID | X | 2 | S | S | P | I5 | C2 | R | M |

| | | |
|---|--------------------|---------------------|
| 1 Device family | HID | Servo drive |
| 2 Version | Empty field | Standard version |
| | X | ATEX device version |
| 3 Device current (nominal current rms) | 2 | 2 A |
| | 5 | 5 A |
| | 8 | 8 A |
| | 10 | 10 A |
| | 15 | 15 A |
| | 16 | 16 A |
| | 25 | 25 A |
| | 35 | 35 A |
| | 45 | 45 A |
| | 75 | 75 A |
| | 100 | 100 A |
| | 130 | 130 A |
| | 250 | 250 A |
| | 450 | 450 A |
| 4 Protocol | S | SBCCan (standard) |
| | D | CANopen (DS402) |

| | | |
|-------------------------------------|--------------------|--|
| 5 Second input encoder | S | for SinCos - 1 V _{pp} signal |
| | E | for digital signals after quadrature - RS422 |
| | H | for SinCos signal + Hall sensor |
| 6 Y1 option cards for slot 1 | Empty field | without option |
| | P | PROFIBUS DP |
| | I | I/O option (8 digital inputs, 8 digital outputs) |
| 7 Y2 option cards for slot 2 | Empty field | without option |
| | I5 | EtherCAT |
| 8 Y3 option cards for slot 3 | Empty field | without option |
| | C | Axis board, without compact flash |
| | C1 | Axis card for up to 1.5 axes (with CANopen DS402) |
| | C2 | Axis card for up to 4 axes (with CANopen DS402) |
| | C3 | Axis card for up to 32 axes (with CANopen DS402) |
| 9 Safety technology | Empty field | without option |
| | R | Built-in Safety relay cat. 3 in accordance with EN 954-1 |
| 10 Memory | Empty field | without option |
| | M | Memory area for retentive variables |

Parker's Motion & Control Technologies

At Parker, we're guided by a relentless drive to help our customers become more productive and achieve higher levels of profitability by engineering the best systems for their requirements. It means looking at customer applications from many angles to find new ways to create value. Whatever the motion and control technology need, Parker has the experience, breadth of product and global reach to consistently deliver. No company knows more about motion and control technology than Parker. For further info call 00800 27 27 5374.



AEROSPACE

Key Markets

- Aircraft engines
- Business & general aviation
- Commercial transports
- Land-based weapons systems
- Military aircraft
- Missiles & launch vehicles
- Regional transports
- Unmanned aerial vehicles

Key Products

- Flight control systems & components
- Fluid conveyance systems
- Fluid metering delivery & atomization devices
- Fuel systems & components
- Hydraulic systems & components
- Inert nitrogen generating systems
- Pneumatic systems & components
- Wheels & brakes



CLIMATE CONTROL

Key Markets

- Agriculture
- Air conditioning
- Food, beverage & dairy
- Life sciences & medical
- Precision cooling
- Processing
- Transportation

Key Products

- CO₂ controls
- Electronic controllers
- Filter driers
- Hand shut-off valves
- Hose & fittings
- Pressure regulating valves
- Refrigerant distributors
- Safety relief valves
- Solenoid valves
- Thermostatic expansion valves



ELECTROMECHANICAL

Key Markets

- Aerospace
- Factory automation
- Food & beverage
- Life science & medical
- Machine tools
- Packaging machinery
- Paper machinery
- Plastics machinery & converting
- Primary metals
- Semiconductor & electronics
- Textile
- Wire & cable

Key Products

- AC/DC drives & systems
- Electric actuators
- Controllers
- Gantry robots
- Gearheads
- Human machine interfaces
- Industrial PCs
- Inverters
- Linear motors, slides and stages
- Precision stages
- Stepper motors
- Servo motors, drives & controls
- Structural extrusions



FILTRATION

Key Markets

- Food & beverage
- Industrial machinery
- Life sciences
- Marine
- Mobile equipment
- Oil & gas
- Power generation
- Process
- Transportation

Key Products

- Analytical gas generators
- Compressed air & gas filters
- Condition monitoring
- Engine air, fuel & oil filtration & systems
- Hydraulic, lubrication & coolant filters
- Process, chemical, water & microfiltration filters
- Nitrogen, hydrogen & zero air generators



FLUID & GAS HANDLING

Key Markets

- Aerospace
- Agriculture
- Bulk chemical handling
- Construction machinery
- Food & beverage
- Fuel & gas delivery
- Industrial machinery
- Mobile
- Oil & gas
- Transportation
- Welding

Key Products

- Brass fittings & valves
- Diagnostic equipment
- Fluid conveyance systems
- Industrial hose
- PTFE & PFA hose, tubing & plastic fittings
- Rubber & thermoplastic hose & couplings
- Tube fittings & adapters
- Quick disconnects



HYDRAULICS

Key Markets

- Aerospace
- Aerial lift
- Agriculture
- Construction machinery
- Forestry
- Industrial machinery
- Mining
- Oil & gas
- Power generation & energy
- Truck hydraulics

Key Products

- Diagnostic equipment
- Hydraulic cylinders & accumulators
- Hydraulic motors & pumps
- Hydraulic systems
- Hydraulic valves & controls
- Power take-offs
- Rubber & thermoplastic hose & couplings
- Tube fittings & adapters
- Quick disconnects



PNEUMATICS

Key Markets

- Aerospace
- Conveyor & material handling
- Factory automation
- Food & beverage
- Life science & medical
- Machine tools
- Packaging machinery
- Transportation & automotive

Key Products

- Air preparation
- Compact cylinders
- Field bus valve systems
- Grippers
- Guided cylinders
- Manifolds
- Miniature fluidics
- Pneumatic accessories
- Pneumatic actuators & grippers
- Pneumatic valves and controls
- Rodless cylinders
- Rotary actuators
- Tie rod cylinders
- Vacuum generators, cups & sensors



PROCESS CONTROL

Key Markets

- Chemical & refining
- Food, beverage & dairy
- Medical & dental
- Microelectronics
- Oil & gas
- Power generation

Key Products

- Analytical sample conditioning products & systems
- Fluoropolymer chemical delivery fittings, valves & pumps
- High purity gas delivery fittings, valves & regulators
- Instrumentation fittings, valves & regulators
- Medium pressure fittings & valves
- Process control manifolds



SEALING & SHIELDING

Key Markets

- Aerospace
- Chemical processing
- Consumer
- Energy, oil & gas
- Fluid power
- General industrial
- Information technology
- Life sciences
- Military
- Semiconductor
- Telecommunications
- Transportation

Key Products

- Dynamic seals
- Elastomeric o-rings
- EMI shielding
- Extruded & precision-cut, fabricated elastomeric seals
- Homogeneous & inserted elastomeric shapes
- High temperature metal seals
- Metal & plastic retained composite seals
- Thermal management

Parker Worldwide

Europe, Middle East, Africa

AE – United Arab Emirates,
Dubai

Tel: +971 4 8127100
parker.me@parker.com

AT – Austria, Wiener Neustadt

Tel: +43 (0)2622 23501-0
parker.austria@parker.com

AT – Eastern Europe, Wiener
Neustadt

Tel: +43 (0)2622 23501 900
parker.easteurope@parker.com

AZ – Azerbaijan, Baku

Tel: +994 50 2233 458
parker.azerbaijan@parker.com

BE/LU – Belgium, Nivelles

Tel: +32 (0)67 280 900
parker.belgium@parker.com

BY – Belarus, Minsk

Tel: +375 17 209 9399
parker.belarus@parker.com

CH – Switzerland, Etoy

Tel: +41 (0)21 821 87 00
parker.switzerland@parker.com

CZ – Czech Republic, Klecany

Tel: +420 284 083 111
parker.czechrepublic@parker.com

DE – Germany, Kaarst

Tel: +49 (0)2131 4016 0
parker.germany@parker.com

DK – Denmark, Ballerup

Tel: +45 43 56 04 00
parker.denmark@parker.com

ES – Spain, Madrid

Tel: +34 902 330 001
parker.spain@parker.com

FI – Finland, Vantaa

Tel: +358 (0)20 753 2500
parker.finland@parker.com

FR – France, Contamine s/Arve

Tel: +33 (0)4 50 25 80 25
parker.france@parker.com

GR – Greece, Athens

Tel: +30 210 933 6450
parker.greece@parker.com

HU – Hungary, Budapest

Tel: +36 1 220 4155
parker.hungary@parker.com

IE – Ireland, Dublin

Tel: +353 (0)1 466 6370
parker.ireland@parker.com

IT – Italy, Corsico (MI)

Tel: +39 02 45 19 21
parker.italy@parker.com

KZ – Kazakhstan, Almaty

Tel: +7 7272 505 800
parker.easteurope@parker.com

NL – The Netherlands, Oldenzaal

Tel: +31 (0)541 585 000
parker.nl@parker.com

NO – Norway, Asker

Tel: +47 66 75 34 00
parker.norway@parker.com

PL – Poland, Warsaw

Tel: +48 (0)22 573 24 00
parker.poland@parker.com

PT – Portugal, Leca da Palmeira

Tel: +351 22 999 7360
parker.portugal@parker.com

RO – Romania, Bucharest

Tel: +40 21 252 1382
parker.romania@parker.com

RU – Russia, Moscow

Tel: +7 495 645-2156
parker.russia@parker.com

SE – Sweden, Spånga

Tel: +46 (0)8 59 79 50 00
parker.sweden@parker.com

SK – Slovakia, Banská Bystrica

Tel: +421 484 162 252
parker.slovakia@parker.com

SL – Slovenia, Novo Mesto

Tel: +386 7 337 6650
parker.slovenia@parker.com

TR – Turkey, Istanbul

Tel: +90 216 4997081
parker.turkey@parker.com

UA – Ukraine, Kiev

Tel +380 44 494 2731
parker.ukraine@parker.com

UK – United Kingdom, Warwick

Tel: +44 (0)1926 317 878
parker.uk@parker.com

ZA – South Africa, Kempton Park

Tel: +27 (0)11 961 0700
parker.southafrica@parker.com

North America

CA – Canada, Milton, Ontario

Tel: +1 905 693 3000

US – USA, Cleveland

Tel: +1 216 896 3000

Asia Pacific

AU – Australia, Castle Hill

Tel: +61 (0)2-9634 7777

CN – China, Shanghai

Tel: +86 21 2899 5000

HK – Hong Kong

Tel: +852 2428 8008

IN – India, Mumbai

Tel: +91 22 6513 7081-85

JP – Japan, Tokyo

Tel: +81 (0)3 6408 3901

KR – South Korea, Seoul

Tel: +82 2 559 0400

MY – Malaysia, Shah Alam

Tel: +60 3 7849 0800

NZ – New Zealand, Mt Wellington

Tel: +64 9 574 1744

SG – Singapore

Tel: +65 6887 6300

TH – Thailand, Bangkok

Tel: +662 186 7000-99

TW – Taiwan, Taipei

Tel: +886 2 2298 8987

South America

AR – Argentina, Buenos Aires

Tel: +54 3327 44 4129

BR – Brazil, Sao Jose dos Campos

Tel: +55 800 727 5374

CL – Chile, Santiago

Tel: +56 2 623 1216

MX – Mexico, Apodaca

Tel: +52 81 8156 6000

We reserve the right to make technical changes. The data correspond to the technical state at the time of printing.
© 2011 Parker Hannifin Corporation.
All rights reserved.

192-141017N4

October 2011



EMEA Product Information Centre

Free phone: 00 800 27 27 5374

(from AT, BE, CH, CZ, DE, DK, EE, ES, FI, FR, IE, IL,
IS, IT, LU, MT, NL, NO, PL, PT, RU, SE, SK, UK, ZA)

US Product Information Centre

Toll-free number: 1-800-27 27 537

www.parker.com

Your local authorized Parker distributor